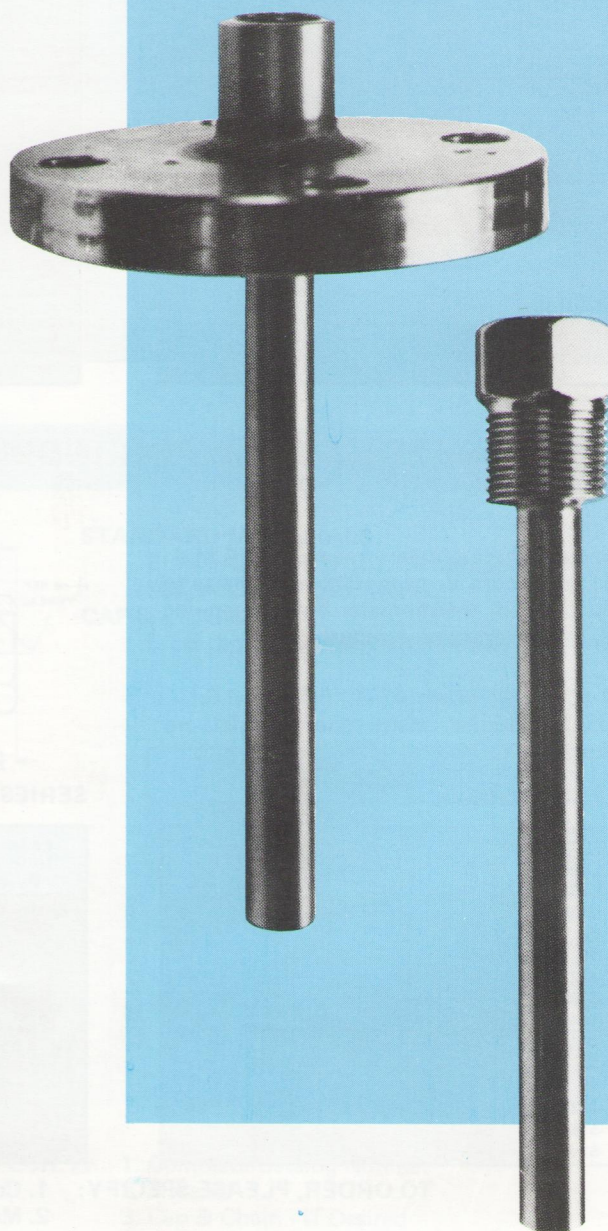


THERMOWELLS



STANDARD THREADED WELL FOR 1/4" DIAMETER ELEMENTS

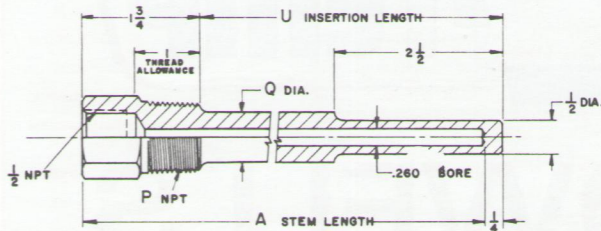
APPLICATION:

Standard length, 1/4" Stem, Bi-metal thermometers; #20 gauge thermocouple elements; unarmored liquid-in-glass test thermometers. Other temperature sensing elements having .252 in. maximum diameter.

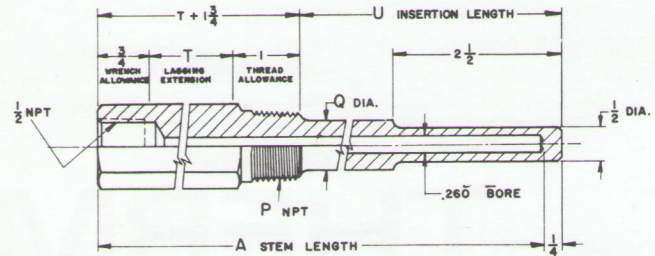
MATERIALS:

Brass (ASTM B-16); Carbon Steel (C-1018); Stainless Steel A.I.S.I. 304 & A.I.S.I. - 316; Monel. Wells are available also in special materials, prices on request.

SERIES 260S - GENERAL USE



SERIES 260L - LAGGING EXTENSION TYPE



EXT. TH'D P	CATALOG NUMBER	STEM LGTH. A	INSERT. LGTH. U	SHANK DIA. Q
1/2" NPT	1/2"-260S -U 2 1/2	4	2 1/2	—
	-U 4 1/2	6	4 1/2	5/8
	-U 7 1/2	9	7 1/2	"
	-U10 1/2	12	10 1/2	"
	-U13 1/2	15	13 1/2	"
	-U16 1/2	18	16 1/2	"
3/4" NPT	3/4"-260S -U 2 1/2	4	2 1/2	—
	-U 4 1/2	6	4 1/2	3/4
	-U 7 1/2	9	7 1/2	"
	-U10 1/2	12	10 1/2	"
	-U13 1/2	15	13 1/2	"
	-U16 1/2	18	16 1/2	"
1" NPT	1"-260S -U 2 1/2	4	2 1/2	—
	-U 4 1/2	6	4 1/2	7/8
	-U 7 1/2	9	7 1/2	"
	-U10 1/2	12	10 1/2	"
	-U13 1/2	15	13 1/2	"
	-U16 1/2	18	16 1/2	"

EXT. TH'D P	CATALOG NUMBER	STEM LGTH. A	INSERT. LGTH. U	LAG. EXT. T	SHANK DIA. Q
1/2" NPT	1/2"-260L -U 2 1/2	6	2 1/2	2	—
	-U 4 1/2	9	4 1/2	3	5/8
	-U 7 1/2	12	7 1/2	3	"
	-U10 1/2	15	10 1/2	3	"
	-U13 1/2	18	13 1/2	3	"
	-U19 1/2	24	19 1/2	3	"
3/4" NPT	3/4"-260L -U 2 1/2	6	2 1/2	2	—
	-U 4 1/2	9	4 1/2	3	3/4
	-U 7 1/2	12	7 1/2	3	"
	-U10 1/2	15	10 1/2	3	"
	-U13 1/2	18	13 1/2	3	"
	-U19 1/2	24	19 1/2	3	"
1" NPT	1"-260L -U 2 1/2	6	2 1/2	2	—
	-U 4 1/2	9	4 1/2	3	7/8
	-U 7 1/2	12	7 1/2	3	"
	-U10 1/2	15	10 1/2	3	"
	-U13 1/2	18	13 1/2	3	"
	-U19 1/2	24	19 1/2	3	"

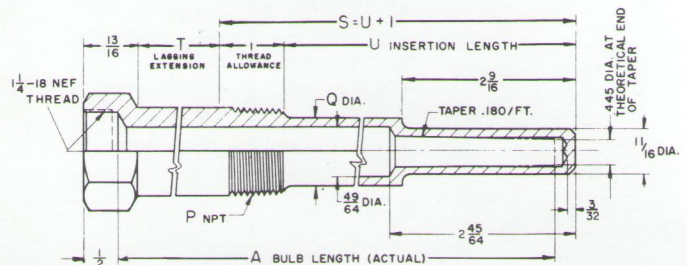
STANDARD THREADED WELL FOR INDUSTRIAL GLASS THERMOMETERS

APPLICATION:

Fits liquid-in-glass thermometers made to S.A.M.A. standards. Tapered bore is made .008 in. oversize to eliminate possibility of thermometer bulb expanding into the well, thus preventing removal.

MATERIALS:

Carbon Steel (C-1018), Brass (ASTM B-16), A.I.S.I.-304 & A.I.S.I. - 316, Monel. Many other materials are available upon request.



SERIES 445S - GENERAL USE

EXT. TH'D P	CATALOG NUMBER	NOMINAL BULB LGTH. A	BULB LGTH. A	INSERT. LGTH. U	SHANK DIA. Q
3/4" NPT	3/4"-445S -S3 1/2	3 1/2	3 5/8	2-9/16	—
	-S6	6	6 1/8	5-1/16	7/8
	-S9	9	9 1/8	8-1/16	"
	-S12	12	12 1/8	11-1/16	"
	-S18	18	18 1/8	17-1/16	"
	-S24	24	24 1/8	23-1/16	"
1" NPT	1"-445S -S3 1/2	3 1/2	3 5/8	2-9/16	—
	-S6	6	6 1/8	5-1/16	1
	-S9	9	9 1/8	8-1/16	"
	-S12	12	12 1/8	11-1/16	"
	-S18	18	18 1/8	17-1/16	"
	-S24	24	24 1/8	23-1/16	"

SERIES 445L - LAGGING EXTENSION TYPE

EXT. TH'D P	CATALOG NUMBER	NOM. BULB LGTH.	LAG. EXT. T	BULB LGTH. A	INSERT. LGTH. U	SHANK DIA. Q
3/4" NPT	3/4"-445L -S 6E	6	2 1/2	6 1/8	2-9/16	—
	-S 9E	9	3	9 1/8	5-1/16	7/8
	-S12E	12	3	12 1/8	8-1/16	"
	-S18E	18	3	18 1/8	14-1/16	"
	-S24E	24	3	24 1/8	20-1/16	"
	1" NPT	1"-445L -S 6E	6	2 1/2	6 1/8	2-9/16
-S 9E		9	3	9 1/8	5-1/16	1
-S12E		12	3	12 1/8	8-1/16	"
-S18E		18	3	18 1/8	14-1/16	"
-S24E		24	3	24 1/8	20-1/16	"

TO ORDER, PLEASE SPECIFY: 1. Complete Catalog Number
2. Material
3. Cap & Chain - If Desired

HEAVY DUTY THREADED WELL FOR 1/4" DIAMETER ELEMENTS

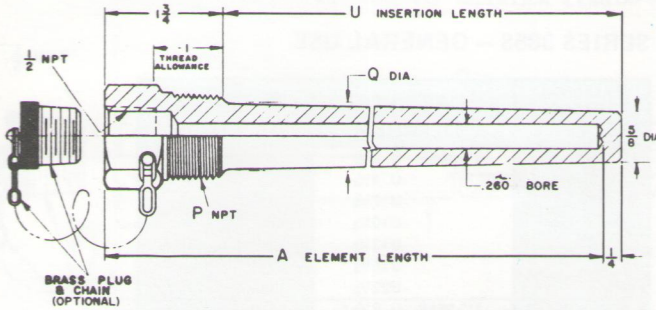
APPLICATION:

Standard length, 1/4" Bi-metal thermometers. #20 gauge thermocouple elements. Unarmored liquid-in-glass test thermometers. Other temperature sensing elements having .252 in. maximum diameter.

CONNECTION SIZE:

3/4" NPT and 1" NPT are standard. Other thread sizes are available upon request.

SERIES 260H – GENERAL USE



EXTERNAL THREAD P	CATALOG NUMBER	ELEM. LGTH. A	INSERT. LGTH. U	SHANK DIA. Q
3/4" NPT	3/4"-260H -U 2 1/2	4	2 1/2	7/8
	-U 4 1/2	6	4 1/2	"
	-U 7 1/2	9	7 1/2	"
	-U10 1/2	12	10 1/2	"
	-U13 1/2	15	13 1/2	"
	-U16 1/2	18	16 1/2	"
1" NPT	1"-260H -U 2 1/2	4	2 1/2	1-1/16
	-U 4 1/2	6	4 1/2	"
	-U 7 1/2	9	7 1/2	"
	-U10 1/2	12	10 1/2	"
	-U13 1/2	15	13 1/2	"
	-U16 1/2	18	16 1/2	"

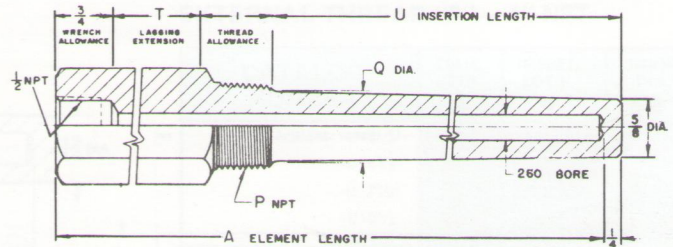
MATERIALS:

Brass (ASTM B-16); Carbon Steel (C-1018); Stainless Steel A.I.S.I. 304 & A.I.S.I. - 316; Monel. Wells are available also in special materials, prices on request.

CAP & CHAIN:

Brass captive cap is available for keeping well bore clean when not in use.

SERIES 260HL – LAGGING EXTENSION TYPE



EXTERNAL THREAD P	CATALOG NUMBER	LAG. EXT. T	ELEM. LGTH. A	INSERT. LGTH. U	SHANK DIA. Q
3/4" NPT	3/4"-260HL -U 2 1/2	2	6	2 1/2	7/8
	-U 4 1/2	3	9	4 1/2	"
	-U 7 1/2	3	12	7 1/2	"
	-U10 1/2	3	15	10 1/2	"
	-U13 1/2	3	18	13 1/2	"
	-U19 1/2	3	24	19 1/2	"
1" NPT	1"-260HL -U 2 1/2	2	6	2 1/2	1-1/16
	-U 4 1/2	3	9	4 1/2	"
	-U 7 1/2	3	12	7 1/2	"
	-U10 1/2	3	15	10 1/2	"
	-U13 1/2	3	18	13 1/2	"
	-U19 1/2	3	24	19 1/2	"

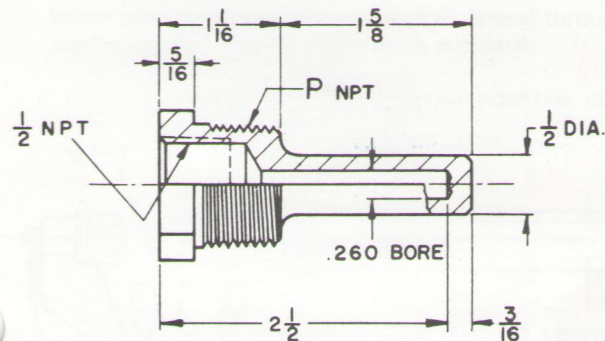
LIMITED SPACE THERMOWELL FOR 1/4" DIAMETER ELEMENTS

APPLICATION:

Used where short insertion length is necessary as in short legs of tees etc. This well also fits the 2 1/2" length Bi-metal thermometer with 1/4" stem diameter.

CONNECTION SIZE:

3/4" NPT and 1" NPT external thread.



STANDARD MATERIALS:

Brass (A.S.T.M. B-16); Carbon Steel (C-1020) A.I.S.I. 304; A.I.S.I. - 316, Monel.

CAP & CHAIN:

Brass captive cap is available upon specification.

EXTERNAL THREAD P	CATALOG NUMBER
3/4" NPT	3/4" - 260A-U1 5/8"
1" NPT	1" - 260A-U1 5/8"

TO ORDER, PLEASE SPECIFY: 1. Complete Catalog Number
2. Material
3. Cap & Chain - If Desired

STANDARD THREADED WELL FOR 3/8" DIAMETER ELEMENTS

APPLICATION:

Standard length, 3/8" Stem, Bi-metal thermometers. #14 gauge thermocouple elements. Armored liquid-in-glass test thermometers. Other temperature sensing elements having .377 in. maximum diameter.

CONNECTION SIZE:

3/4" NPT and 1" NPT are standard. Other thread sizes are available upon request.

MATERIALS:

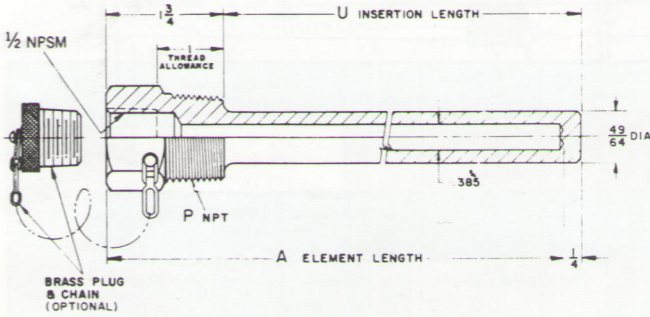
Brass (A.S.T.M. B-16); Carbon Steel (C-1018); A.I.S.I. 304; A.I.S.I. - 316; Monel. Wells also are available in special materials, prices on request.

CAP & CHAIN:

Brass captive cap is available for keeping well bore clean when not in use.

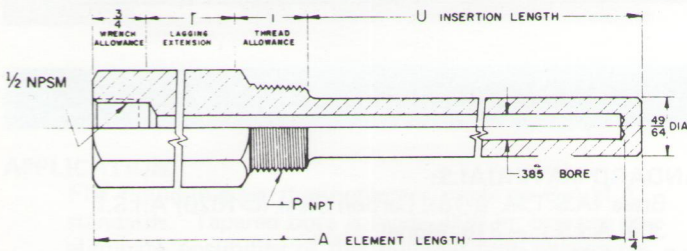
SERIES 385S – GENERAL USE

EXTERNAL THREAD P	CATALOG NUMBER	A ELEM. LGTH.	INSERT. LGTH. U
3/4" NPT	3/4"-385S -U 2 1/2	4	2 1/2
	-U 4 1/2	6	4 1/2
	-U 7 1/2	9	7 1/2
	-U 10 1/2	12	10 1/2
	-U 13 1/2	15	13 1/2
	-U 16 1/2	18	16 1/2
1" NPT	1"-385S -U 2 1/2	4	2 1/2
	-U 4 1/2	6	4 1/2
	-U 7 1/2	9	7 1/2
	-U 10 1/2	12	10 1/2
	-U 13 1/2	15	13 1/2
	-U 16 1/2	18	16 1/2
	-U 22 1/2	24	22 1/2



SERIES 385L – LAGGING EXTENSION TYPE

EXTERNAL THREAD P	CATALOG NUMBER	LAG. EXT. T	ELEM. LGTH. A	INSERT. LGTH. U
3/4" NPT	3/4"-385L -U 2 1/2	2	6	2 1/2
	-U 4 1/2	3	9	4 1/2
	-U 7 1/2	3	12	7 1/2
	-U 10 1/2	3	15	10 1/2
	-U 13 1/2	3	18	13 1/2
	-U 19 1/2	3	24	19 1/2
1" NPT	1"-385L -U 2 1/2	2	6	2 1/2
	-U 4 1/2	3	9	4 1/2
	-U 7 1/2	3	12	7 1/2
	-U 10 1/2	3	15	10 1/2
	-U 13 1/2	3	18	13 1/2
	-U 19 1/2	3	24	19 1/2



TO ORDER, PLEASE SPECIFY:

1. Complete Catalog Number
2. Material
3. Cap & Chain - If Desired

HEAVY DUTY THREADED WELL FOR 3/8" DIAMETER ELEMENTS

APPLICATION:

Standard length, 3/4" Stem, Bi-metal thermometers. #14 gauge thermocouple elements. Armored liquid-in-glass test thermometers. Other temperature sensing elements having .377 in. maximum diameter.

CONNECTION SIZE:

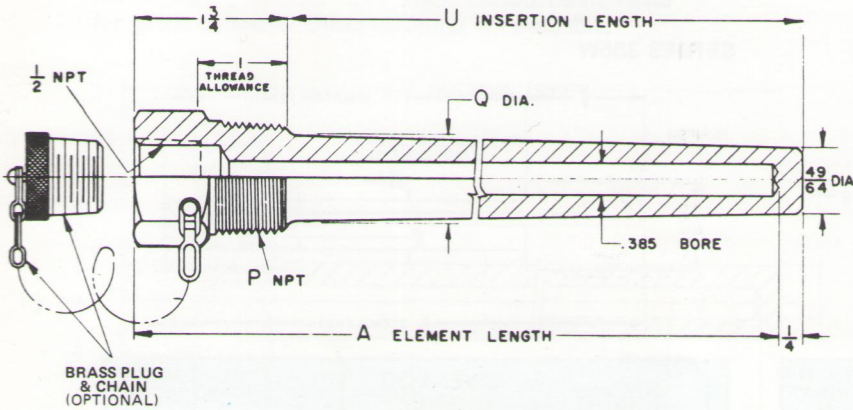
1" NPT is standard. Other thread sizes are available upon request.

MATERIALS:

Brass (A.S.T.M. B-16); Carbon Steel (C-1018) A.I.S.I. 304; A.I.S.I. - 316; Monel. Wells also are available in special materials, prices on request.

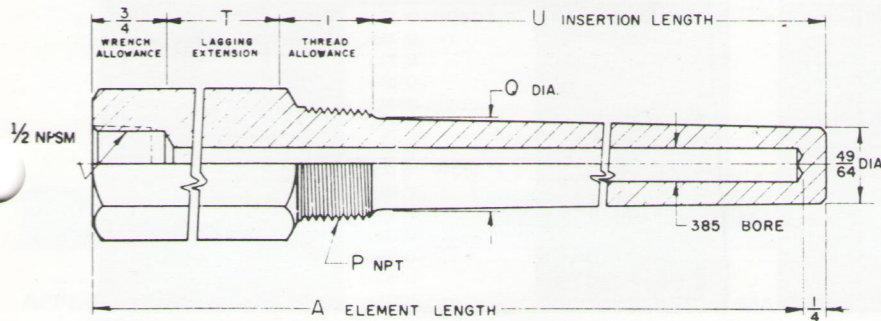
CAP & CHAIN:

Brass captive cap is available for keeping well bore clean when not in use.



SERIES 385H – GENERAL USE EXTERNAL THREAD "P" – 1" NPT

CATALOG NUMBER	ELEM. LGTH. A	INSERT. LGTH. U	SHANK DIA. Q
1"-385H -U 2 1/2	4	2 1/2	1-1/16
-U 4 1/2	6	4 1/2	"
-U 7 1/2	9	7 1/2	"
-U 10 1/2	12	10 1/2	"
-U 13 1/2	15	13 1/2	"
-U 16 1/2	18	16 1/2	"
-U 22 1/2	24	22 1/2	"



SERIES 385HL – LAGGING EXTENSION TYPE EXTERNAL THREAD "P" – 1" NPT

CATALOG NUMBER	LAG. EXT. T	ELEM. LGTH. A	INSERT. LENGTH U	SHANK DIA. Q
1"-385HL -U 2 1/2	2	6	2 1/2	1-1/16
-U 4 1/2	3	9	4 1/2	"
-U 7 1/2	3	12	7 1/2	"
-U 10 1/2	3	15	10 1/2	"
-U 13 1/2	3	18	13 1/2	"
-U 19 1/2	3	24	19 1/2	"

GENERAL PURPOSE TEST WELL FOR 3/8" DIAMETER ELEMENTS

APPLICATION:

Armored liquid-in-glass test thermometers
#14 gauge test thermocouples
Bi-metal test thermometers

CONNECTION SIZE:

1/2" NPT external thread is standard

LAGGING EXTENSION:

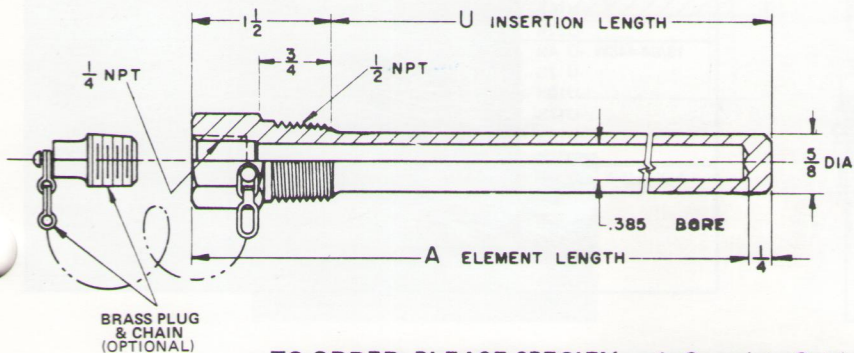
When extra head length is required to extend through insulation, 2 1/2" lagging extension is standard.

MATERIALS:

Brass (A.S.T.M. B-16) Carbon Steel (C-1018)
A.I.S.I. 304 A.I.S.I. 316
Other materials are available on request.

CAP & CHAIN:

Brass captive plug & Chain is furnished on all wells as standard.



DIMENSIONS – SERIES 385A

CATALOG NUMBER	INSERTION LENGTH U	ELEM LENGTH A
1/2"-385A -U 2	2	3 1/4
-U 4	4	5 1/4
-U 6	6	7 1/4
-U 8	8	9 1/4
-U 10	10	11 1/4
-U 12	12	13 1/4

TO ORDER, PLEASE SPECIFY: 1. Complete Catalog Number
2. Material
3. Cap & Chain - If Desired (Standard on 385A)

SOCKET-WELD THERMOWELLS FOR 1/4" AND 3/8" DIAMETER ELEMENTS

APPLICATION:

260W series fits standard length 1/4" diameter elements.
385W series fits standard length 3/8" diameter elements.

CONNECTION:

3/4" or 1" nominal pipe size welding shoulder fits ASA welding fittings, flanges, etc. Wells for larger pipe size fittings are available on request.

MATERIALS:

Carbon Steel (C-1018), A.I.S.I.—304, A.I.S.I.—316 are standard. Other materials are available on request.

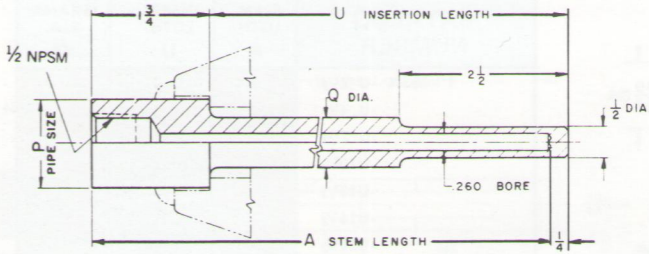
LAGGING EXTENSION:

When specifying lagging extension, choose a length which will permit the use of a standard element length. (See 260L and 385L lengths)

CAP & CHAIN:

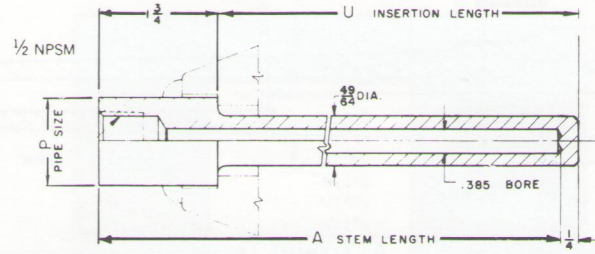
Brass captive cap is available for keeping well bore clean when not in use.

SERIES 260W



PIPE SIZE P	CATALOG NUMBER	SHANK DIA. Q	P	STEM LGTH. A	LENGTH INSERT. U
3/4" Nominal (1.050 Dia.)	3/4"-260W -U 2 1/2	3/4	1.050	4	2 1/2
	-U 4 1/2	"	"	6	4 1/2
	-U 7 1/2	"	"	9	7 1/2
	-U 10 1/2	"	"	12	10 1/2
	-U 13 1/2	"	"	15	13 1/2
	-U 16 1/2	"	"	18	16 1/2
1" Nominal (1.315 Dia.)	1"-260W -U 2 1/2	7/8	1.315	4	2 1/2
	-U 4 1/2	"	"	6	4 1/2
	-U 7 1/2	"	"	9	7 1/2
	-U 10 1/2	"	"	12	10 1/2
	-U 13 1/2	"	"	15	13 1/2
	-U 16 1/2	"	"	18	16 1/2
-U 22 1/2	"	"	24	22 1/2	

SERIES 385W



PIPE SIZE P	CATALOG NUMBER	P	STEM LGTH. A	INSERT. LGTH. U
3/4" Nominal (1.050 Dia.)	3/4"-385W -U 2 1/2	1.050	4	2 1/2
	-U 4 1/2	"	6	4 1/2
	-U 7 1/2	"	9	7 1/2
	-U 10 1/2	"	12	10 1/2
	-U 13 1/2	"	15	13 1/2
	-U 16 1/2	"	18	16 1/2
1" Nominal (1.315 Dia.)	1"-385W -U 2 1/2	1.315	4	2 1/2
	-U 4 1/2	"	6	4 1/2
	-U 7 1/2	"	9	7 1/2
	-U 10 1/2	"	12	10 1/2
	-U 13 1/2	"	15	13 1/2
	-U 16 1/2	"	18	16 1/2
-U 22 1/2	"	24	22 1/2	

BAR STOCK WELD-IN THERMOWELLS

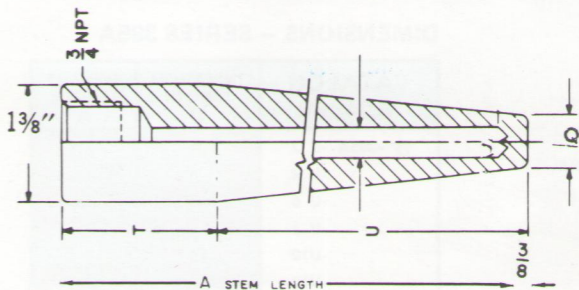
APPLICATION:

Weld-in Wells are used for high pressure.

MATERIALS:

Carbon Steel (C-1018); Stainless Steel A.I.S.I.—304 & A.I.S.I.—316; Monel. Wells are available also in special materials, prices on request.

SERIES 445W



CAP & CHAIN:

Brass captive cap is available for keeping well bore clean when not in use.

CATALOG NUMBER	STEM LGTH. A	INSERT. LGTH. U	SHANK DIA. Q	LAG. EXT. T	BORE DIA. B
3/8"-445W	-U 4 1/2	6	3 3/8	3"	3/8
	-U 7 1/2	9	6 3/8	"	"
	-U 10 1/2	12	9 3/8	"	"
	-U 13 1/2	15	12 3/8	"	"
	-U 16 1/2	18	15 3/8	"	"
	-U 22 1/2	24	21 3/8	"	"
13/64-445W	-U 4 1/2	6	3 3/8	3"	13/64
	-U 7 1/2	9	6 3/8	"	"
	-U 10 1/2	12	9 3/8	"	"
	-U 13 1/2	15	12 3/8	"	"
	-U 16 1/2	18	15 3/8	"	"
	-U 22 1/2	24	21 3/8	"	"
1/2"-445W	-U 4 1/2	6	3 3/8	3"	1/2
	-U 7 1/2	9	6 3/8	"	"
	-U 10 1/2	12	9 3/8	"	"
	-U 13 1/2	15	12 3/8	"	"
	-U 16 1/2	18	15 3/8	"	"
	-U 22 1/2	24	21 3/8	"	"

TO ORDER, PLEASE SPECIFY:

1. Complete Catalog Number
2. Material
3. Cap & Chain - If Desired

FLANGED THERMOWELLS FOR 1/4" AND 3/8" DIAMETER ELEMENTS

APPLICATION:

260F series fits standard length 1/4" diameter elements.
385F series fits standard length 3/8" diameter elements.

FLANGE SIZES:

1" and 1 1/2" flanges in all facings and pressure ratings are standard. Other sizes are available on application.

MATERIALS:

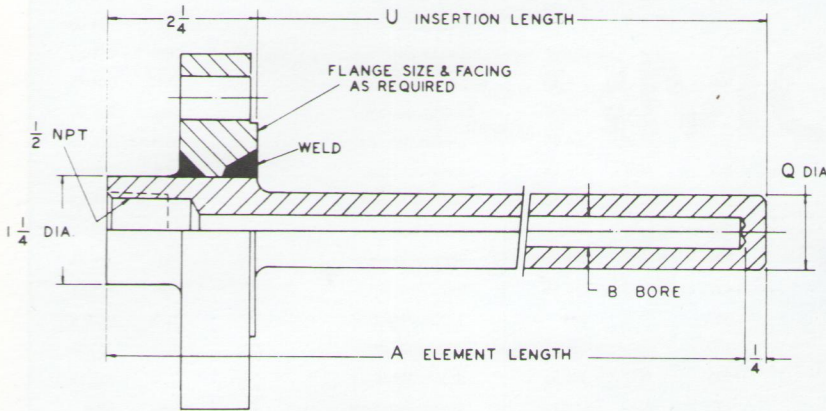
Flanges and wells made of Carbon Steel (C-1018), A.I.S.I.-304, A.I.S.I.-316 and Monel are available for quick delivery. Other materials are available.

WELDING:

Primary weld is "J" groove type, secondary weld is 45° bevel groove. Welding is performed by Navy certified welders using inert gas shielded arc.

CAP & CHAIN:

Brass captive cap is available for keeping well bore clean when not in use.



SERIES 260F

CATALOG NUMBER	ELEM. LGTH. A	INSERT. LGTH. U	SHANK DIA. Q	BORE DIA. B
260F -U 2	4	2	3/4	.260
-U 4	6	4	"	
-U 7	9	7	"	
-U10	12	10	"	
-U13	15	13	"	
-U16	18	16	"	
-U22	24	22	"	

SERIES 385F

CATALOG NUMBER	ELEM. LGTH. A	INSERT. LGTH. U	SHANK DIA. Q	BORE DIA. B
385F -U 2	4	2	7/8	.385
-U 4	6	4	"	
-U 7	9	7	"	
-U10	12	10	"	
-U13	15	13	"	
-U16	18	16	"	
-U22	24	22	"	

VAN STONE THERMOWELLS FOR 1/4" AND 3/8" DIAMETER ELEMENTS

APPLICATION:

260V series fits standard length 1/4" diameter elements.
385V series fits standard length 3/8" diameter elements.

CONNECTION SIZE:

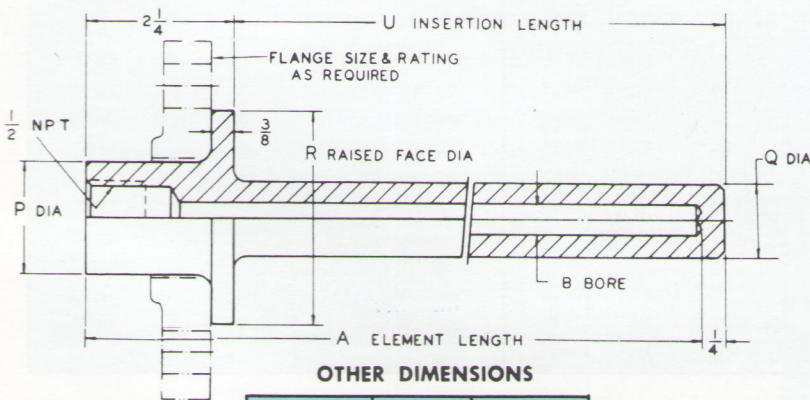
Standard wells fit 1" and 1 1/2" lap joint flanges. Other sizes also available.

MATERIALS:

Carbon Steel (C-1018), A.I.S.I.-304, A.I.S.I.-316 and Monel are standard. Other materials are available.

BACKING FLANGE:

When desired, a carbon steel lap joint flange can be supplied with these wells, when ordering, specify flange pressure.



OTHER DIMENSIONS

Pipe Size Nominal	Actual Dia. P	Raised Face Dia. R
1	1.315	2
1 1/2	1.900	2 7/8

SERIES 260V

CATALOG NUMBER	ELEM. LGTH. A	INSERT. LGTH. U	SHANK DIA. Q	BORE DIA. B
260V -U 2	4	2	3/4	.260
-U 4	6	4	"	
-U 7	9	7	"	
-U10	12	10	"	
-U13	15	13	"	
-U16	18	16	"	
-U22	24	22	"	

SERIES 385V

CATALOG NUMBER	ELEM. LGTH. A	INSERT. LGTH. U	SHANK DIA. Q	BORE DIA. B
385V -U 2	4	2	7/8	.385
-U 4	6	4	"	
-U 7	9	7	"	
-U10	12	10	"	
-U13	15	13	"	
-U16	18	16	"	
-U22	24	22	"	

TO ORDER, PLEASE SPECIFY:

1. Complete Catalog Number
2. Material
3. Flange Size, Pressure & Facing
4. Cap & Chain - If Desired

CORROSIVE SERVICE GUIDE TO MATERIALS

CORRODENT	TEMP. °F.	CONC. %	RECOM. MATERIAL	CORRODENT	TEMP. °F.	CONC. %	RECOM. MATERIAL	CORRODENT	TEMP. °F.	CONC. %	RECOM. MATERIAL
Acetic Acid	212	ALL	Monel	Copper Plating Solution (Cyanide)	180		304 SS	Oleic Acid			SEE FATTY ACIDS
Acetic Anhydride	300		Nickel	Copper Plating Solution (Acid)	75		304 SS	Oxalic Acid	212	ALL	Monel
Acetone	212	ALL	304 SS	Corn Oil	200		304 SS	Photographic Bleaching	100	ALL	304 SS
Acetylene	400		304 SS	Creosote	200	ALL	304 SS	Palmitic Acid			SEE FATTY ACIDS
Alcohols	212	ALL	304 SS	Crude Oil	300		Monel	Phosphoric Acid	212	ALL	316 SS
Alum (Potassium or Sodium)	300	ALL	Hast. C	Ethyl Acetate			SEE LACQUER THINNER	Phenol	212	ALL	316 SS
Aluminum Chloride	212	ALL	Hast. B	Ethyl Chloride, Dry	500		Steel	Potassium Compounds			SEE SODIUM COMPOUNDS
Aluminum Sulfate	212	ALL	316 SS	Ethanol			SEE ALCOHOLS	Propane	300		Steel
Ammonia, Dry	212	ALL	304, 316 SS	Ethylene Glycol (Uninhibited)	212	ALL	304 SS	Rosin	700	100%	316 SS
Ammonia Hydroxide (Ammonia, Aqua)	212	ALL	304, 316 SS	Ethylene Oxide	75		Steel	Sea Water	75		Monel
Ammonium Chloride	300	50%	Monel	Fatty Acids	500	ALL	316 SS	Soap & Detergents	212	ALL	304 SS
Ammonium Nitrate	300	ALL	304 SS	Ferric Chloride	75	ALL	Hast. C	Sodium Bicarbonate	212	20%	316 SS
Ammonium Sulfate	212	ALL	316 SS	Ferric Sulfate	300	ALL	304 SS	Sodium Bisulphite	212	20%	304 SS
Amyl Acetate	300	ALL	304 SS	Formaldehyde	212	40%	316 SS	Sodium Bisulphate	212	20%	304 SS
Aniline	75		Monel	Formic Acid	300	ALL	316 SS	Sodium Carbinat	212	40%	316 SS
Asphalt	250		304 SS	Freon	300		Steel	Sodium Chloride	300	30%	Monel
Atmosphere, (Industrial and Marine)			304 SS	Fluorine, Anhydrous	100		304 SS	Sodium Chromate	212	ALL	316 SS
Barium Compounds		SEE CALCIUM		Furfural	450		316 SS	Salt or Brine			SEE SODIUM CHLORIDE
Beer	70		304 SS	Gasoline	300		Steel	Sodium Cyanide	212	ALL	304 SS
Benzene (Benzol)	212		Steel	Glucose	300		304 SS	Sodium Hydroxide	212	30%	316 SS
Benzoic Acid	212	ALL	316 SS	Glue ph 6-8	300	ALL	304 SS	Sodium Hypochlorite	75	10%	Hast. C
Bleaching Powder	70	15%	Monel	Glycerine	212	ALL	Brass	Sodium Nitrate	212	40%	304 SS
Borax	212	ALL	Brass	Hydrobromic Acid	212	ALL	Hast. C	Sodium Nitrite	75	20%	316 SS
Bordeaux Mixture	200		304 SS	Hydrochloric Acid (37-38%)	225	ALL	Hast. B	Sodium Phosphate	212	10%	Steel
Boric Acid	400	ALL	316 SS	Hydrogen Chloride, Dry	500		304 SS	Sodium Silicate	212	10%	Steel
Bromine	125	DRY	Monel	Hydrocyanic Acid	212	ALL	304 SS	Sodium Sulfate	212	30%	316 SS
Butane	400	ALL	Steel	Hydrofluoric Acid	212	60%	Monel	Sodium Sulfide	212	10%	316 SS
Butyl Alcohol		SEE ALCOHOLS		Hydrogen Fluoride, Dry	175		Steel	Sodium Sulfite	212	30%	304 SS
Butyric Acid	212		Hast. C	Hydroflungilic Acid	212	40%	Monel	Sodium Thiosulfate	212	ALL	304 SS
Calcium Bisulphite	75	ALL	Hast. C	Hydrogen Peroxide	125	10-100%	304 SS	Steam			304 SS
Calcium Chloride	212	ALL	Hast. C	Kerosene	300	ALL	Steel	Stearic Acid			SEE FATTY ACIDS
Calcium Hydroxide	300	20%	Hast. C	Lacquers & Thinners	300	ALL	304 SS	Sugar Solutions			SEE GLUCOSE
Calcium Hypochlorite		SEE BLEACHING POWDER		Lactic Acid	300	ALL	316 SS	Sulfur	500		304 SS
Carbolic Acid		SEE PHENOL		Lime	212	ALL	316 SS	Sulfur Chloride	75	DRY	316 SS
Carbon Dioxide, Dry	800	ALL	Brass	Linseed Oil	75		Steel	Sulfur Dioxide	500	DRY	316 SS
Carbonated Water	212	ALL	304 SS	Magnesium Chloride	212	50%	Nickel	Sulfur Trioxide	500	DRY	316 SS
Carbonated Beverages	212		304 SS	Magnesium Hydroxide (or Oxide)	75	ALL	304 SS	Sulfuric Acid	212	10%	316 SS
Carbon Disulfide	200		304 SS	Magnesium Sulfate	212	40%	304 SS	Sulfuric Acid	212	10-90%	Hast. B
Carbon Tetrachloride	125	ALL	Monel	Mercuric Chloride	75	10%	Hast. C	Sulfuric Acid, Fuming	175	90-100%	Hast. B
Chlorine, Dry	100		Monel	Mercury	700	100%	Steel	Sulfurous Acid	75	20%	316 SS
Chlorine, Moist	100	ALL	Monel	Methylene Chloride	212	ALL	304 SS	Titanium Tetrachloride	75	ALL	316 SS
Chloroacetic Acid	212	ALL	Monel	Methyl Chloride, Dry	75		Steel	Tannic Acid	75	40%	Hast. B
Chloroform, Dry	212		Monel	Milk, fresh or sour	180		304 SS	Toluene	75		Steel
Chromic Acid	300	ALL	Hast. C	Molasses			SEE GLUCOSE	Trichloroacetic Acid	75	ALL	Hast. B
Cider	300	ALL	304 SS	Natural Gas	70		304 SS	Trichlorethylene	300	DRY	Monel
Citric Acid	212	ALL	Hast. C	Nitric Acid	75	ALL	304 SS	Turpentine	75		316 SS
Copper (10) Chloride	212	ALL	Hast. C	Nitric Acid	300	ALL	316 SS	Varnish	150		Steel
Copper (10) Nitrate	300	ALL	316 SS	Oxygen	75	ALL	Steel	Zinc Chloride	212	ALL	Hast. B
Copper (10) Sulfate	300	ALL	316 SS					Zinc Sulfate	212	ALL	316 SS

In recommending the above materials, consideration has been given to providing good service life without undue cost. Where two or more materials are satisfactory, the least expensive is listed. Consult the factory for information on materials or services not given.

YOUR AREA REPRESENTATIVE:



1285 Jefferson Street • Anaheim, California 92807
 (714) 630-8451 • 1-800-28C-TEMP • FAX (714) 630-3560